
Oregon Health Authority Behavioral Health Update

Presented to
NAMI Oregon
November 14, 2020

Steve Allen
Behavioral Health Director
Oregon Health Authority



Topics

- Commitment to Engagement
- Where are we heading?
- Near-term action:
 - COVID-19 and Wildfire Response
- Intermediate/longer-term action:
 - Behavioral Health Policy Vision
 - Secretary of State Audit
 - Governor's Behavioral Health Advisory Council
- Challenges and Unknowns

Commitment to Engagement

- For our behavioral health system to be truly effective, change must be led by the people who use those systems and supports.
- For too long, we have been making decisions without doing enough to involve the people impacted by them – especially our Tribal communities and Communities of Color. This must change.
- We commit to partnering with the people who use these services and supports to co-create solutions.
- We also need the help of the legislature to implement these recommendations and build a better system.

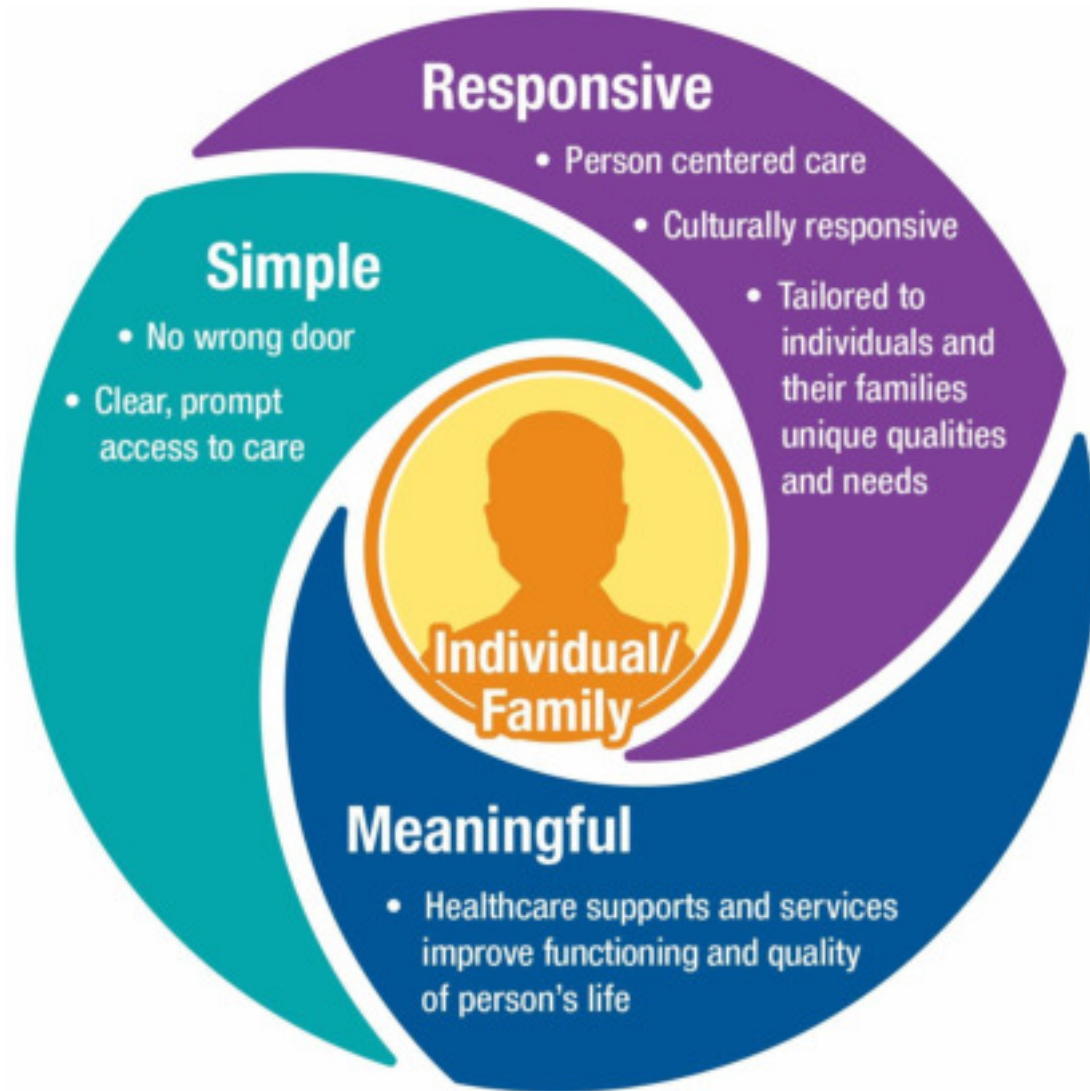
Introduction: Where We Are Heading

**Agency
Strategic
Goal:**

- To eliminate health inequity in Oregon by 2030

**Behavioral
Health
System
Vision:**

- Care must be simple, responsive and meaningful



Introduction, cont.

OHA's strategic direction for behavioral health is also significantly impacted by the circumstances and learnings of 2020

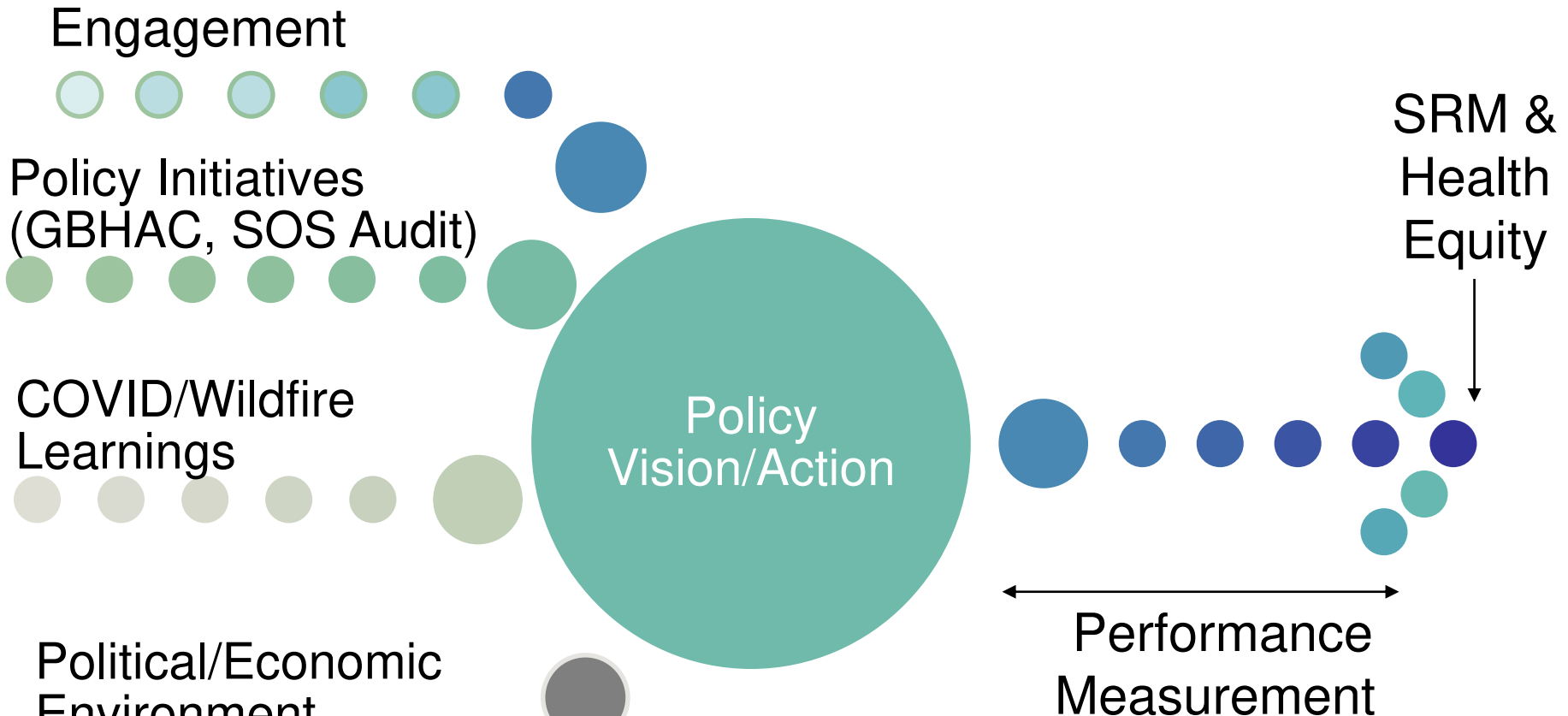
Near-term

- COVID-19 and impact on behavioral health needs and providers
- Wildfires

Intermediate/long-term:

- Secretary of State Audit
- Governor's Behavioral Health Advisory Council
- Unknowns:
 - Budget Landscape
 - Elections/Ballot Measures

Path to Health Equity and Simple, Meaningful and Responsive (SRM)



Near-term action: COVID-19 and Wildfire Response

Coronavirus Relief Fund Status & Overview

- The legislature allocated \$25 million in CARES funds in June to support culturally responsive and barrier-reducing behavioral health activities in an effort to mitigate the impacts of the COVID-19 pandemic.
- Funding Includes:
 - Harm Reduction Supplies
 - Community Residential Capacity
 - Residential Program Infection Control
 - CBO culturally specific services
 - Safe+Strong Campaign
 - Oregon Behavioral Health Access System
 - Funding for Tribes

Media Campaign

Safe + Strong

TRANSLATE ENGLISH

Live And Work Safely Community Support

It's okay to ask for help

No matter the distance, there's always support. When everything feels out of control, there's help for you and those you love.

Find resources you need to stay safe and strong.

Site last updated: 07-17-2020

Other COVID-19/Wildfire Efforts

- FEMA Crisis Counseling Program (CCP)
- Suicide Prevention
- Provider Stability Efforts
 - CCO flexibility
 - County funding flexibility & Coronavirus Relief Funds to CMHPs
 - Telehealth payment equity
 - Medicaid Vacancy Payments through Disaster State Plan Amendment

Disaster Response Efforts Build to Equity through the SRM Framework

- Simple: Safe+Strong and OBHAS provide streamlined access to a range of crisis and BH supports for easier access to culturally responsive services that meet their needs
- Responsive: OHA's grants for community-based organizations and culturally/linguistically responsive services and harm reduction.
- Meaningful: Resources focused on community needs, including housing, crisis supports, access to overdose prevention.

Intermediate/long-term action: Behavioral Health Policy Vision

Policy Vision

- OHA-BH is in the process of developing a policy vision paper for the Children and Family Behavioral Health Unit that provides primary work objectives and **a plan for engaging stakeholders and community for strategies to improve the children's system.**
- The policy vision will incorporate recommendations from the Secretary of State's Audit and work toward the goal of creating a system that centers health equity and is simple, responsive, and meaningful.

Policy Vision, cont.

Child & Family
Behavioral Health
Policy Vision

Draft framework and steps:

- Address gaps and quality in the children's BH continuum of care
- Accurate and timely data across child-serving systems
- Increase youth and family participation in service planning and system development
- Promote and develop a culturally and linguistically responsive continuum of care
- Increase cross system collaboration
- Emphasize and promote trauma-informed practice

Policy Vision, cont.

OHA will take similar approach for adult system.

Policy Vision for child and adult systems will:

- Center equity and consumer engagement
- Build on disaster response efforts/lessons learned
- Engage larger health system efforts, including CCO 2.0
- Draw on existing strategic initiatives and form the basis for long-term planning.
- Provide basis for performance measurement

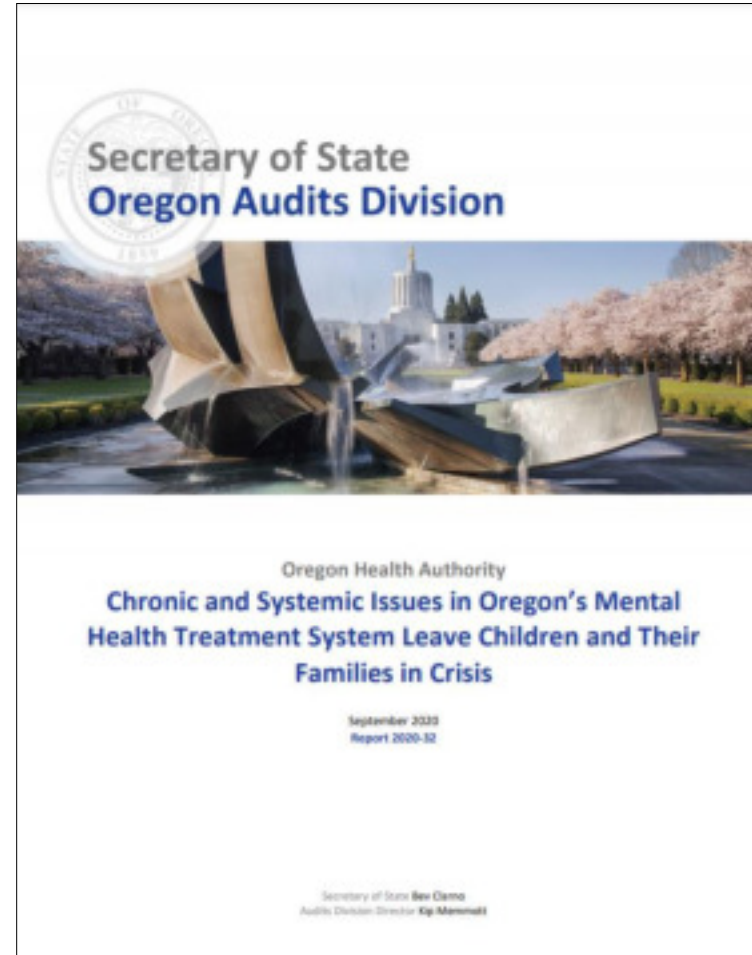
**Intermediate/long-term action: Secretary
of State Audit**

About the audit

The Secretary of State routinely audits state agencies. In the course of an audit of the children's mental health system, the team expanded its scope to include the behavioral health system as a whole.

They looked back at the past two decades of work on mental health in Oregon.

The audit was published Sept. 9, 2020.



The Audit's Main Findings

Data shortfalls

Workforce shortages

Fragmented delivery system

Inadequate monitoring of spending on county programs

Inadequate Funding

Lack of consistent leadership, vision and governance

OHA's Response

OHA welcomed and agreed with all 22 recommendations.

In our response, we provided context for each finding:

- ✓ Where it fits within OHA values and strategic vision
- ✓ Its intersection with health equity
- ✓ How we're centering the voices of consumers
- ✓ Challenges and barriers to implementation

Improved engagement

- The audit notes that OHA needs to improve its connections between leadership and its advisory groups and to update its existing stakeholder map. It also suggests the creation of a public education campaign for mental health.
 - Work is already under way to identify all the formal and informal boards, commissions and groups that advise the Behavioral Health Director.
 - Also, we have received funding to support a broad-based public information campaign to help people understand mental health. The Safe + Strong campaign launched behavioral health resources on Sept. 23.
 - Oregon is also one of few states to have a director of Consumer Activities reporting directly to the Behavioral Health Director.

Audit Response 2021 Legislative Asks

- Legislative Concepts:
 - Need statutory changes to SB 944 (2017)
- Policy Option Packages (Subject to inclusion in the Governor's Request Budget)
 - POP 414: OHA proposed funding for COMPASS modernization which would continue to address data integration and reporting issues.
 - POP 409: OHA proposed funding for a behavioral health workforce retention and recruitment incentive fund.

SOS Audit Efforts Build to Equity through the SRM Framework

- Simple: a system wide needs assessment for the children and family continuum of care, which is key to improving simplicity of access.
- Responsive: evaluating advisory bodies and engagement channels to make more meaningful and to improve responsiveness.
- Meaningful: data collection/data systems, metrics and outcomes to measure the performance of the behavioral health system.

**Intermediate/long-term action:
Governor's Behavioral Health Advisory
Council**

GBHAC Recommendations

- The Governor charged the GBHAC with developing “recommendations aimed at improving access to effective behavioral health services and supports for all Oregon adults and transition-aged youth with serious mental illness or co-occurring mental illness and substance use disorders.”
- The recommendations include investments in programs and services, workforce and housing.

GBHAC 2021 Legislative Asks

- Legislative Concepts:
 - LC 419 was developed as a placeholder legislative concept to further refine some of the initiatives in statute.
- Policy Option Packages (Subject to inclusion in the Governor's Request Budget)
 - POP 409 incorporates many of the elements of the GBHAC recommendations.
 - POP 411 also includes elements of the Aid and Assist community restoration ask.

GBHAC Efforts Build to Equity through the SRM Framework

- Simple: Investment in flexible housing funds that can support recovery in a variety of ways.
- Responsive: Investment in Tribal Based Practice and a Peer Run Respite Pilot. Investment in workforce incentives.
- Meaningful: Investment in in long-term rental assistance and services to support people in the community for the long term.

Major Challenges and Unknowns

Major Challenges/Unknowns

- **Funding:**

- Federal funding: CARES Act Funding expires at the end of 2020, ending many of the Coronavirus Relief Fund programs listed above. If needs related to the pandemic persist, OHA-BH will be without additional response funding to meet escalating needs, including pressing needs in addiction and suicide.
- General Fund Reductions: With the economic impacts of the pandemic, OHA-BH has taken budget reductions for 2019-2021 and could take further reductions.

Major Challenges/Unknowns, cont.

- **Provider/workforce stability:**
 - Oregon already faces workforce shortages – especially with respect to culturally/linguistically responsive providers.
 - Pandemic places financial strain on behavioral health providers, including lay-offs and possible closures.
- **Elections/Ballot Measures:**
 - Federal Elections:
 - SUD Waiver Approval
 - Additional federal coronavirus/disaster relief
 - Ballot Measure:
 - Measure 110

QUESTIONS?